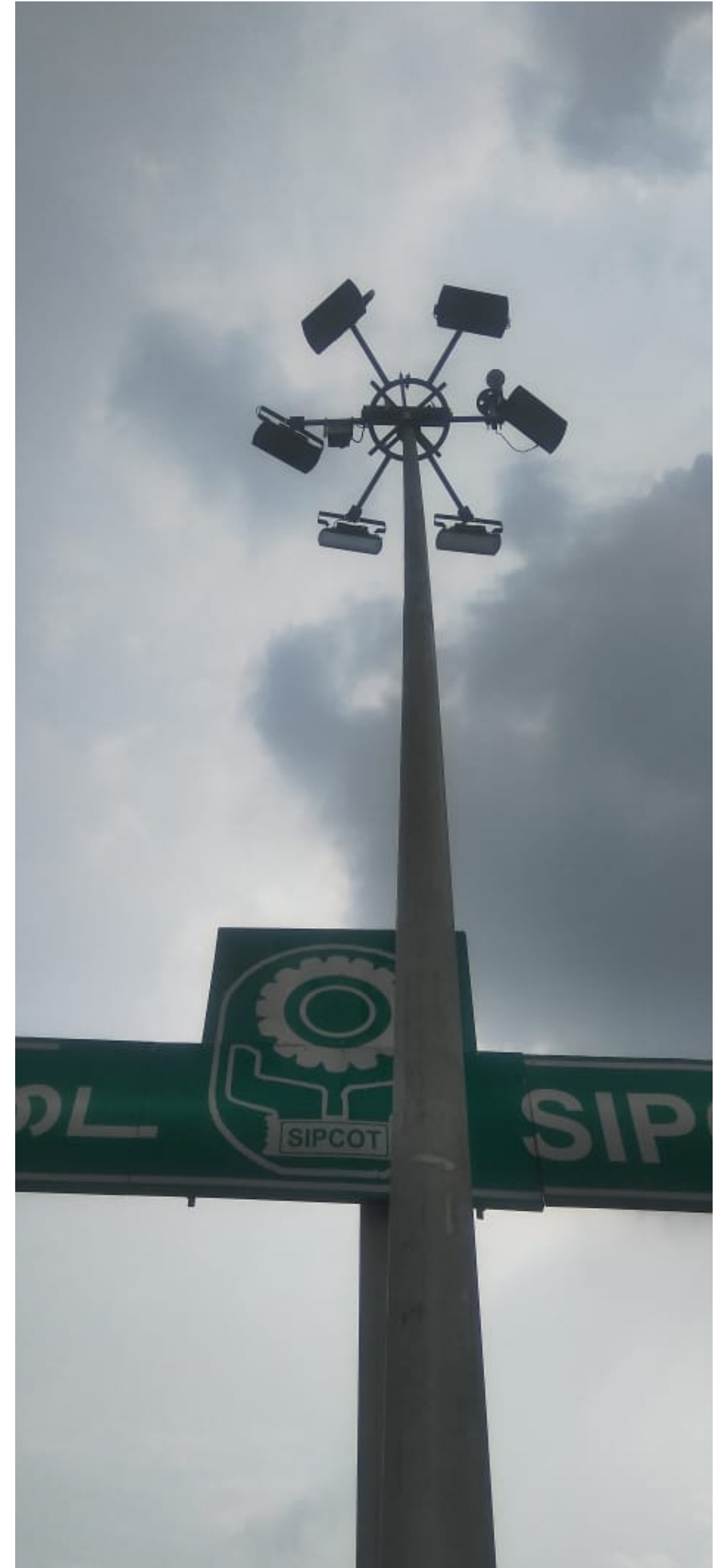




LIGHTING ANYWHERE, ANYTIME

For roadways, ports and other industrial areas that require high-mounted light structures, BE tapered steel high masts are the superior solution.

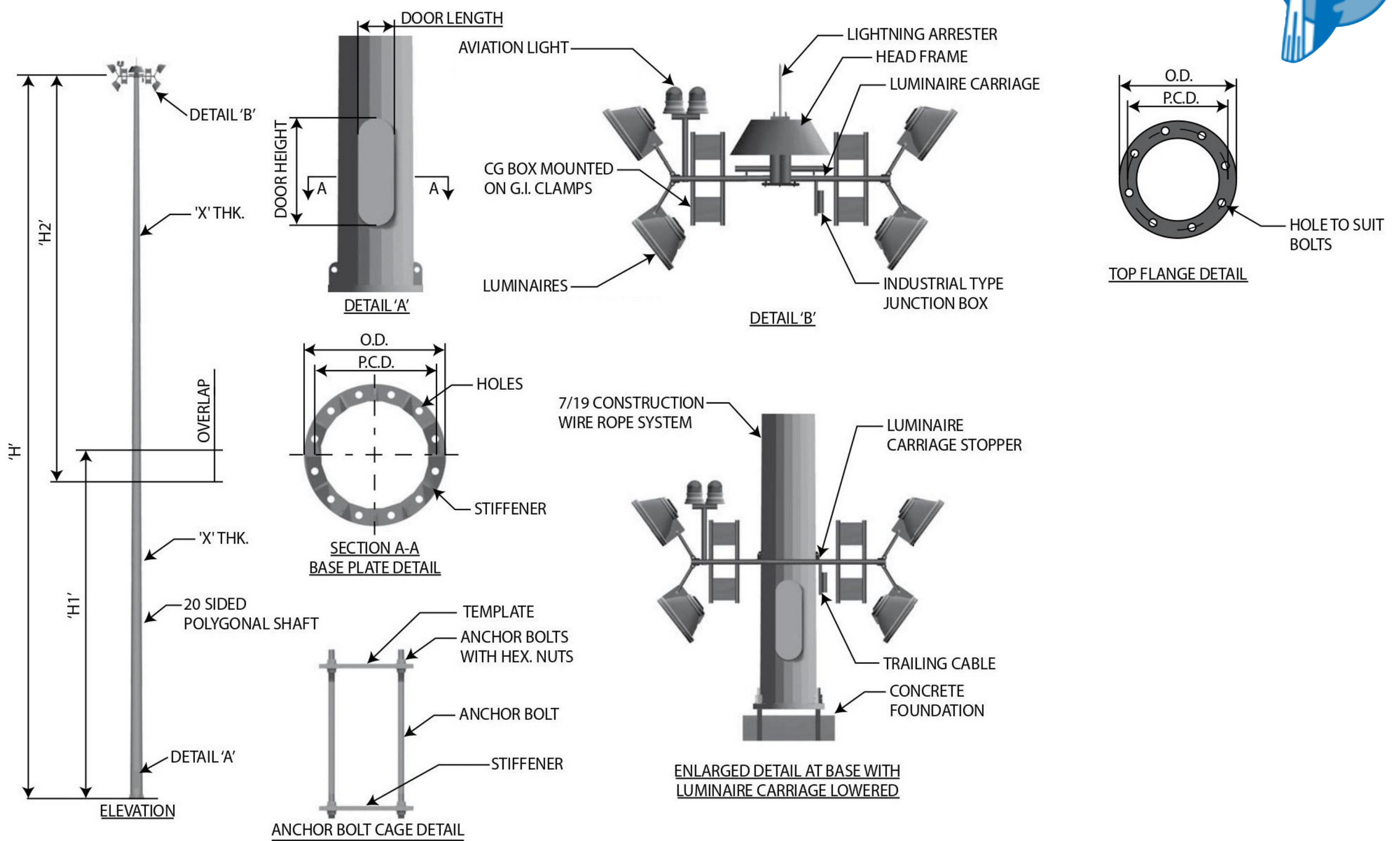


YOUR HIGH MAST LIGHTING SOLUTION

High Mast are often located where today's most busy expressways merge or intersect. BE tapered steel high mast also supports other large area lighting applications, such as those found at airports, shopping mall, heavy industry zones. IN all those applications, safety is paramount and technical design expertise is essential.

IN-HOUSE ENGINEERING EXPERTISE

Engineers, architects, contractors and city planners rely on BE for unparalleled safety and quality manufacturing for high masts. Our engineers consider lighting load, tower weight, variable wind speeds, local soil conditions and a host of other relevant variables, which less experienced suppliers may overlook. Meeting the needs of you, our customer, is our top priority. No matter how large or small your order, our focus is to provide a quality product, to deliver that product on time and as per your project requirement.



BE High Masts are of continuously tapered, polygonal cross section, presenting a visually aesthetic appearance and are based on proven designs conforming to international standards, ensuring quality performance and reliable service. We ensure that our high masts conform to various international industry standards and specifications. The design life of the mast is a minimum of 25 years.

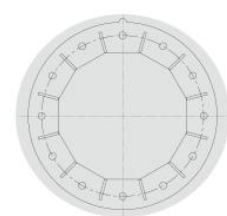
- The structure is suitable for wind speed as per IS 875 Part III 2015 and PLG 07.
- The mast is fabricated from special steel plates, conforming to ASTM A 572/BS EN 10025.
- The welding is in accordance with the American Welding Society (AWS).
- The entire mast is single hot-dip galvanised, internally and externally as per ASTM A123 and A153.
- The top and bottom diameters and plate thickness of the mast are designed as per EN 40.



Up to 30 Metres
in Height



Raising & Lowering
Mechanism Available



Traditional
Base Plate Design



Hot-Dip Galvanised
for Better Protection

**To know more about products manufactured by BE, please visit our website
www.balaenterprises.in/ www.theflagpoles.com**



/balaenterprisesbalamurugan



/balaenterprisestheflagpole



/balaenterprisesbalamurugan